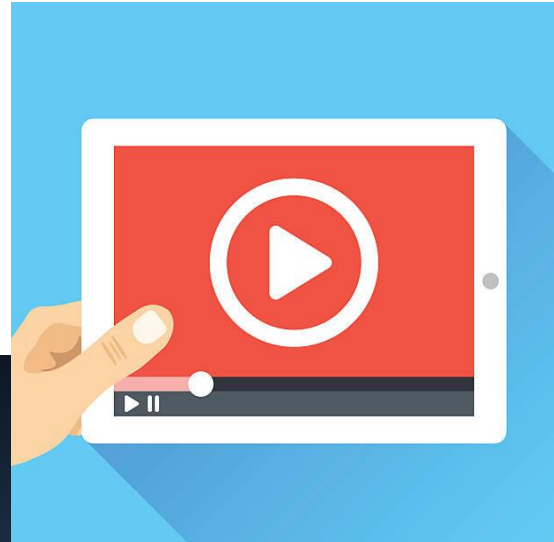


Solid Tumor Manual Review

- **Kidney**

Presented by Melissa Riddle, ODS-C
ICR VIDEO TRAINING SERIES | Iowa Cancer Registry
March 2025



1

Solid Tumor Rules Manual

Last updated 2025

Urinary

- C659 Renal Pelvis
- C669 Ureter
- C670-C679 All subsites of bladder
- C680-C689 Urethra, paraurethral gland, overlapping lesion of urinary organs and urinary system NOS

Kidney



- C649 only

2

2

Kidney Introduction

- Renal cell carcinoma (RCC) 8312 is a group term
 - Glandular (adeno) carcinoma of the kidney
 - 85% of all kidney malignancies are RCC or subtype/variant
 - Clear cell renal cell carcinoma (ccRCC) 8310 is most common
- Urothelial carcinoma of the upper urinary system usually arises in renal pelvis C659
 - Urothelial carcinoma (8120) and Papillary urothelial carcinoma (8130) is biologically impossible in the kidney C649

3

Table 1

- Specific Histologies, NOS and Subtype/Variants
- Use as directed by Histology rules
- Columns and rows important

NOS/Specific Histology Term and Code	Synonyms	Subtypes/Variants
Renal cell carcinoma NOS 8312 <i>Note 1:</i> WHO, IARC, and CAP agree that sarcomatoid carcinoma is a pattern of differentiation, not a specific subtype, of renal cell carcinoma. <i>Note 2:</i> Sarcomatoid is listed in the CAP Kidney protocol under the header "features."	Eosinophilic renal cell carcinoma Oncocytic renal cell carcinoma RCC Renal cell spindle cell carcinoma Sarcomatoid carcinoma Sarcomatoid renal cell carcinoma	Acquired cystic disease-associated renal cell carcinoma/tubulocystic renal cell carcinoma 8316* Chromophobe renal cell carcinoma (ChRCC)/Hybrid oncocytic chromophobe tumor 8317 Clear cell papillary renal cell carcinoma 8323/3 <i>Note:</i> The 2016 WHO 4th Ed Class. of Tumors of the Urinary System and Male Genital Organs has reclassified this histology as /1 because it is low nuclear grade and is now thought to be a neoplasia. This change has NOT yet been implemented and it remains reportable . Clear cell renal cell carcinoma (ccRCC) 8310 Collecting duct carcinoma 8319

4

Table 2

• Non-reportable neoplasms

Column 1 lists the not reportable histology **term** and **code**. Not all of the non-reportable neoplasms have codes.
Column 2 lists **synonyms** for the term in column 1. Synonyms have the same histology code (if applicable) as listed in column 1.

Not Reportable Histology Term and Code	Synonyms
Adult cystic teratoma 8959/0	Mixed epithelial and stromal tumor Pediatric cystic nephroma Renal epithelial stromal tumor
Angiomyolipoma 8860/0	Angiomyolipoma with epithelial cysts Oncocytic angiomyolipoma
Congenital mesoblastic nephroma 8960/1	CMN Cellular congenital mesoblastic nephroma Classic congenital mesoblastic nephroma Mesoblastic nephroma Mixed congenital mesoblastic nephroma
Cystic partially-differentiated nephroblastoma 8959/1	
Epithelioid angioliipoma 8860/1*	

5

5

Multiple
Primary
Rules

Unknown if Single or Multiple
(Rule M1)

Single Tumor (Rule M2)

- Single tumor is always a single primary

Multiple Tumors (M3-M13)

6

6

Example 1 Kidney

66Y WF found on CT scan to have two nodules in R kidney; a 4cm tumor in upper pole and a 1cm tumor in lower pole. Surgery: R Radical Nephrectomy was done.

PATH: 3/17/2024 R kidney and adrenal gland: DX= Renal cell carcinoma, clear cell type [8310/3], TS= 3.5cm confined to kidney with no invasion of capsule. Also noted was smaller 1cm kidney nodule of renal medullary carcinoma [8510/3] in lower pole. Adrenal WNL.

How many primaries is this?

7

Example 1: Kidney

M3 – Different ICDO site codes at second, third, or fourth

- Keep going...

M4 - Bilateral nephroblastomas

- Keep going...

M5 – Right and Left kidneys involved

- Keep going...

M6 – Clinically disease free for more than 3 years

- Keep going...

8

8

Example 1: Kidney

M7 – Separate/non-contiguous tumor two+ different subtypes/variants, column 3, Table 1

- Keep going...

M8 – Synchronous (same time), separate/non-contiguous tumor same row, Table 1

- Keep going...

M9 – Separate/non-contiguous tumors on different rows Table 1

- RCC, clear cell type 8310 and Medullary 8510
- 2 separate tumors in R kidney
- **Multiple abstracts**



9

9

Example 1: Kidney

NOS/Specific Histology Term and Code	Synonyms	Subtypes/Variants
Medullary carcinoma 8510 <i>Note:</i> Renal medullary carcinoma is a new term (previously called renal spindle cell carcinoma).	Medullary adenocarcinoma Renal medullary carcinoma SMARCB1-deficient medullary-like RCC SMARCB1-deficient undifferentiated RCC, NOS SMARCB1-deficient dedifferentiated RCC of other specific subtypes	
Nephroblastoma 8960 Neuroendocrine tumor (NET) 8240/3 <i>Note:</i> Extra-adrenal paraganglioma, NOS reportable for cases diagnosed 1/1/2024 forward	Wilms tumor Carcinoid [OBS] Well-differentiated neuroendocrine tumor	Extra-adrenal paraganglioma 8693/3* Large cell neuroendocrine carcinoma/tumor 8013/3 Small cell neuroendocrine carcinoma 8041/3
Paraganglioma 8700/3 <i>Note:</i> Reportable for kidney C64.9 beginning 1/1/2024	Extra-adrenal pheochromocytoma	
Renal cell carcinoma NOS 8312 <i>Note 1:</i> WHO, IARC, and CAP agree that sarcomatoid carcinoma is a pattern of differentiation, not a specific subtype, of renal cell carcinoma. <i>Note 2:</i> Sarcomatoid is listed in the CAP Kidney protocol under the header "features."	Eosinophilic renal cell carcinoma Oncocytic renal cell carcinoma RCC Renal cell spindle cell carcinoma Sarcomatoid carcinoma Sarcomatoid renal cell carcinoma	Acquired cystic disease-associated renal cell carcinoma/tubulocystic renal cell carcinoma 8316* Chromophobe renal cell carcinoma (ChRCC)/Hybrid oncocytic chromophobe tumor 8317 Clear cell papillary renal cell carcinoma 8323/3 <i>Note:</i> The 2016 WHO 4th Ed Class. of Tumors of the Urinary System and Male Genital Organs has reclassified this histology as /1 because it is low nuclear grade and is now thought to be a neoplasia. This change has NOT yet been implemented and it remains reportable . Clear cell renal cell carcinoma (ccRCC) 8310 Collecting duct carcinoma 8319

- Medullary carcinoma 8510
- Clear cell RCC 8310
 - Different rows
 - Two distinctly different histologies

10

10

Example 1 Kidney

PATH: 3/17/2024 R kidney and adrenal gland: DX= Renal cell carcinoma, clear cell type, TS= 3.5cm confined to kidney with no invasion of capsule. Also noted was smaller 1cm kidney nodule of renal medullary carcinoma in lower pole. Adrenal WNL.

Data Item	Code	Resource
How many primaries?	2	M9
Tumor 01		
Primary Site	C649	
Histology	8310/3	H1 Table 1
Tumor 02		
Primary Site	C649	
Histology	8510/3	H1 Table 1

11

11

Kidney M Rules

Multiple Tumors	
M10	Abstract single primary when in situ tumor diagnosed after invasive tumor AND tumors occur in same kidney. See notes
M11	Abstract single primary (invasive) when invasive tumor is diagnosed less than or equal to 60 days after in situ tumor of same kidney. See notes
M12	Abstract multiple primaries when invasive tumor occurs more than 60 days after in situ tumor. See notes.

12

12

Histology Coding

- **Priority Order** for using documents to identify histology
- **Coding Histology rules**
 - Code the most specific
 - Differentiation or features of
 - Ambiguous terms only when A or B is true
 - List of Ambiguous terms
 - Do not code histology described as:
 - Architecture; foci-focus-focal; pattern

13

13

Kidney Histology Rules

Single Tumor	
Rule H1	Code the histology when only one histology is present. See notes
Rule H2	Code the NOS histology when there are: <ul style="list-style-type: none"> • NOS and 2 or more variants of that NOS present in the tumor <u>OR</u> • Two or more variants of a NOS present in the tumor (see examples)
Rule H3	Code the subtype/variant when a NOS and a single subtype/variant of that NOS are present (see examples)

14

14

Kidney Histology Rules

Multiple Tumors Abstracted as a Single Primary	
Rule H4	Code the histology when only one histology is present in all tumors. See notes
Rule H5	Code the NOS when there are: <ul style="list-style-type: none"> • A NOS and two or more variants of that NOS present in the tumors <u>OR</u> • Two or more variants of a NOS present in the tumors • See examples
Rule H6	Code the subtype/variant when a NOS and a single subtype/variant of that NOS are present such as the following: See examples

15

15

Example 2: Kidney

70Y WM with back pain, work up identified 6cm tumor in L kidney. Total Nephrectomy was done.

Path: 5/30/2024 L kidney: DX= Renal cell CA, papillary renal cell carcinoma and mucinous tubular and spindle cell carcinoma.

How many primaries is this?

Single Tumor – M2

What is the histology?

This is a single tumor made up of multiple histology types

16

16

Example 2: Kidney

Table 1: Specific Histologies, NOS, and Subtypes/Variants

NOS/Specific Histology Term and Code	Synonyms	Subtypes/Variants
Renal cell carcinoma NOS 8312 <i>Note 1:</i> WHO, IARC, and CAP agree that sarcomatoid carcinoma is a pattern of differentiation, not a specific subtype, of renal cell carcinoma. <i>Note 2:</i> Sarcomatoid is listed in the CAP Kidney protocol under the header "features." <i>Note 3:</i> Continue coding sarcomatoid renal cell carcinoma as 8312 until otherwise indicated. <i>Note 4:</i> "Oncocytic" indicates cells that have abundant eosinophilic cytoplasm due to the accumulation of mitochondria and is not a histologic type unless listed in column 3. <i>Note 5:</i> Beginning with cases diagnosed 1/1/2022 forward, SDHD is coded 8311/3. Cases diagnosed prior to 1/1/2022 should be coded 8312.	Eosinophilic renal cell carcinoma Oncocytic renal cell carcinoma RCC Renal cell spindle cell carcinoma Sarcomatoid Sarcomatoid renal cell carcinoma Succinate dehydrogenase-deficient renal cell carcinoma (SDHD) (pre-2022) Unclassified renal cell carcinoma	Acquired cystic disease-associated renal cell carcinoma/tubulocystic renal cell carcinoma 8316* Chromophobe renal cell carcinoma (ChRCC)/Hybrid oncocytic chromophobe tumor 8317 Clear cell papillary renal cell carcinoma 8323/3 <i>Note:</i> The 2016 WHO 4th Ed Class. of Tumors of the Urinary System and Male Genital Organs has reclassified this histology as /1 because it is low nuclear grade and is now thought to be a neoplasia. This change has NOT yet been implemented and it remains reportable . Clear cell renal cell carcinoma (ccRCC) 8310 Collecting duct carcinoma 8319 ELOC (formerly TCEB1) mutated RCC 8311^ Eosinophilic solid and cystic RCC 8311^ Fumarate hydratase-deficient RCC ALK-rearranged RCC 8311^ Hereditary leiomyomatosis and renal cell carcinoma-associated renal cell carcinoma 8311^ MiT family translocation renal cell carcinomas 8311^ Succinate dehydrogenase-deficient renal cell carcinoma (SDHD) 8311^ (reportable beginning 1/1/2022) T(6;11) RCC 8311^ TFE3-rearranged RCC 8311^ TFE3-altered RCC 8311^ Xp11 translocation RCC 8311^ <i>Note:</i> The 8311 terms marked with a caret^ above have the same ICD-O code but are distinctly different histologies. Because they are different, they are on different lines in column 3 (see M rules). Mucinous tubular and spindle cell carcinoma 8480* Papillary renal cell carcinoma (PRCC) 8260

Our working information is that there is an NOS – RCC 8312 and 2 subtypes/variants – Mucinous tubular & spindle cell 8480 and Papillary RCC 8260

17

17

Example 2: Kidney

H1 – One histology present

- Keep going...

H2 – NOS and 2+ variants of that NOS or 2+ variants of NOS

- RCC (NOS) and 2 subtypes/variants of RCC
 - Mucinous tubular and spindle cell carcinoma 8480
 - Papillary RCC 8260
 - **Code the NOS: 8312**



18

18

Example 2: Kidney

70Y WM with back pain, work up identified 6cm tumor in L kidney. Total Nephrectomy was done.

Path: 5/30/2024 L kidney: DX= Renal cell CA, papillary renal cell carcinoma and mucinous tubular and spindle cell carcinoma.

Data Item	Code	Resource
How many primaries?	1	M2
Primary Site	C649	
Histology	8312/3	H2, Table 1

19

19

Example 3: Kidney

60Y WM with back pain, work up identified 8cm tumor in L kidney. Radical Nephrectomy was done.

PATH: 2/14/24 L kidney, perirenal fat & adrenal gland: DX= renal cell carcinoma with clear cell carcinoma architecture.

M2 There is only one tumor=one abstract

What is the histology code?

20

20

Kidney Histology Rules

4. DO NOT CODE histology when described as:

- Architecture
- Foci; focus; focal
- Pattern

DX=renal cell carcinoma with clear cell carcinoma
architecture

- When we ignore the architecture portion as instructed by the histology coding instructions we have a single histology.

21

21

Example 3: Kidney

60Y WM with back pain, work up identified 8cm tumor in L kidney. Radical Nephrectomy was done.
PATH: 2/14/24 L kidney, perirenal fat & adrenal gland: DX= renal cell carcinoma with clear cell carcinoma architecture.

Data Item	Code	Resource
How many primaries?	1	M2
Primary Site	C649	
Histology	8312/3	H1, Table 1

22

22

SEER*Educate

<https://educate.fredhutch.org/Identity/Account/Login>

Training | Coding CEs

– Dx 2018-2024 Solid Tumor Rules

- Kidney 1-5



23

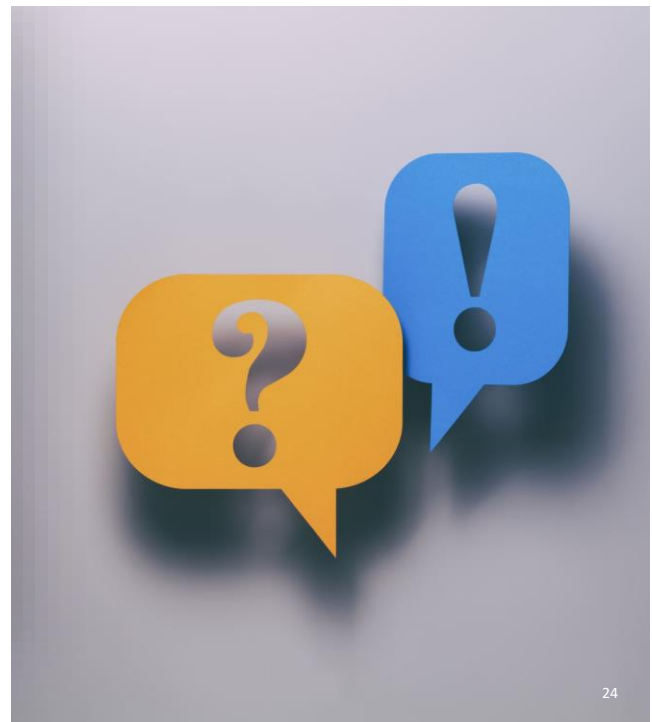
23

Questions

Contact:

Melissa Riddle, ODS-C

melissa-riddle@uiowa.edu



24

24