

Iowa ranks...

#2 in the nation for rate of new cancer cases in the Black population

#3 for rate of cancer deaths

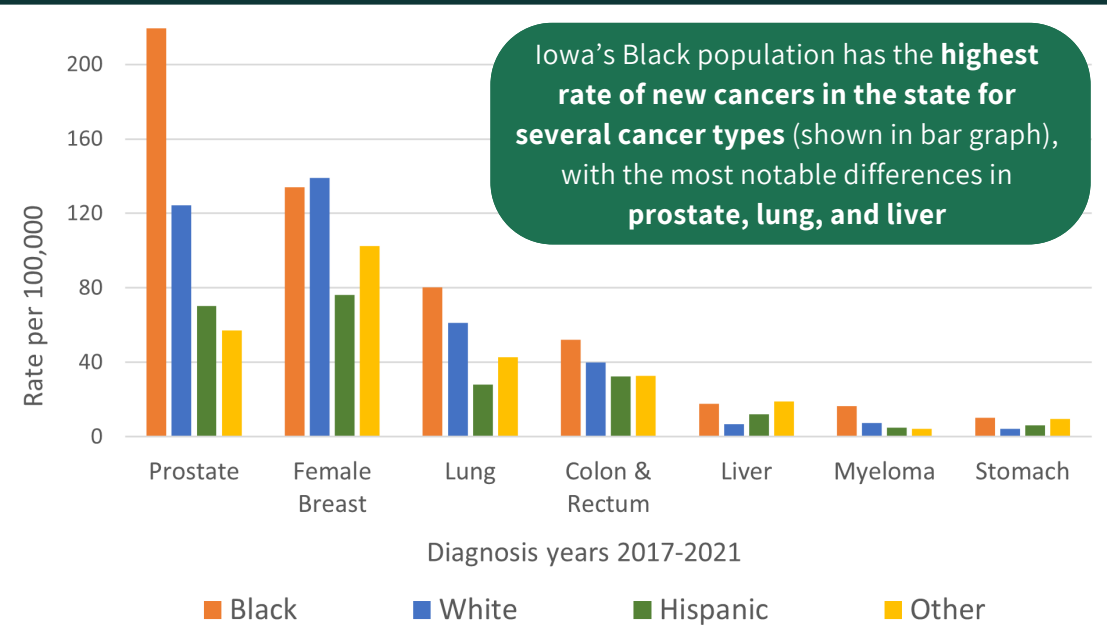
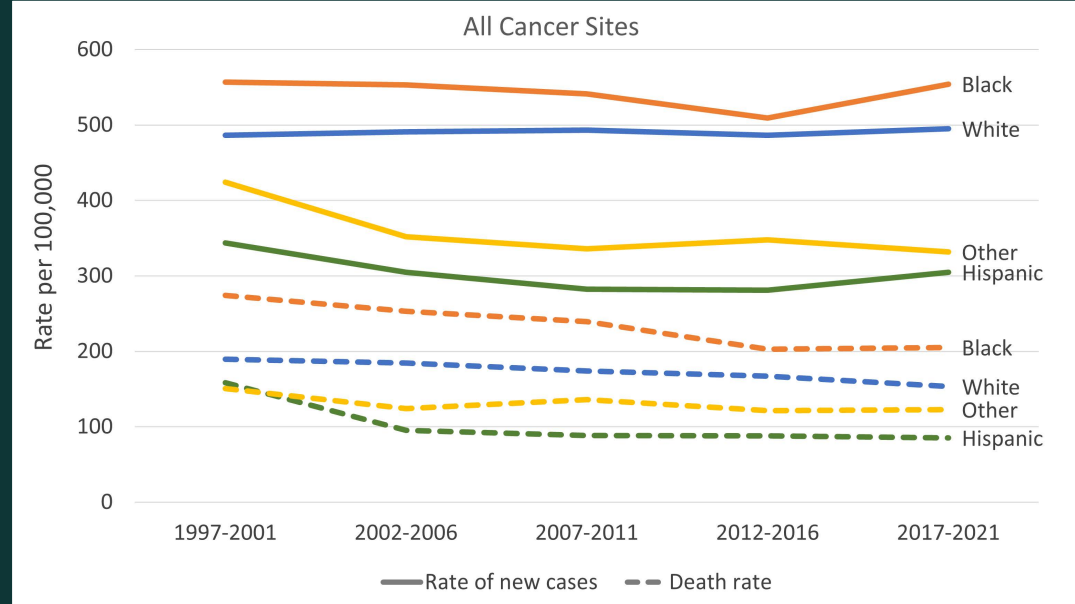


In 2024 there will be...

an estimated **440 new cases of cancer**, **135 cancer deaths**, and **2,760 survivors** in Iowa's Black population

Studies suggest the strongest drivers of cancer health disparities are structural and social drivers, including income, education level, occupation, discrimination, and access to healthcare

- The figure on the right shows the rates of new cases and cancer deaths among Iowans. Iowa's Black population has the highest rate of all new cancer cases.
- The death rate for all cancers has decreased for all races/ethnicities over the last 20+ years, yet the rate among Iowa's Black population remains higher compared to other racial/ethnic groups.



Iowa's Black population has the **highest rate of new cancers in the state for several cancer types** (shown in bar graph), with the most notable differences in **prostate, lung, and liver**

Research shows...

that even among White and Black populations of the same socioeconomic levels, there are disparities in health outcomes.

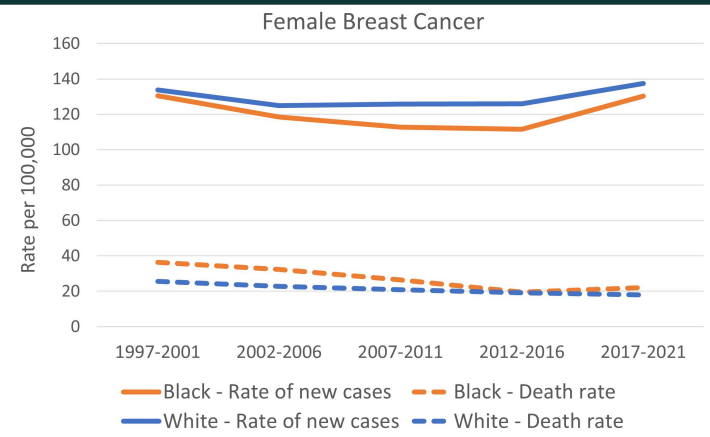
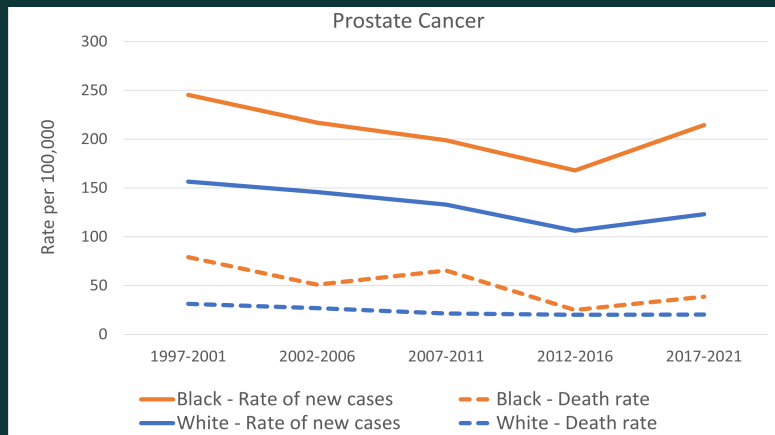
This leads researchers to look for other causes of these disparities, such as institutional and structural racism. In Iowa, we need to better understand the causes/drivers of these disparities.

Cancer Among Iowa's Black Population

PROSTATE CANCER

Prostate cancer is the most common cancer in males.

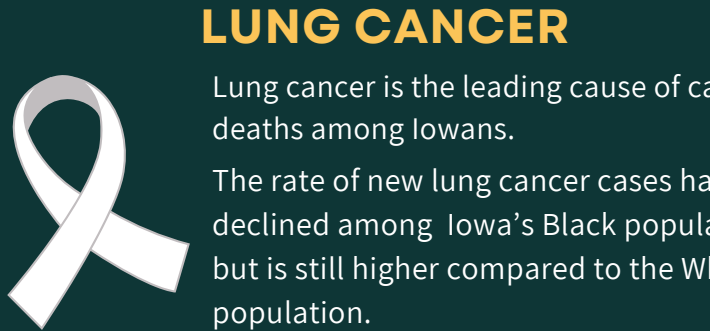
In Iowa, the rates of new prostate cancer cases and prostate cancer deaths are higher in the Black population compared to the White population.



BREAST CANCER

Breast cancer is the most common cancer in females.

In Iowa, the rate of new breast cancer cases is higher in the White population, while the rate of breast cancer deaths has been higher in the Black population. However, the rate of breast cancer deaths has declined and is now similar to the White population.

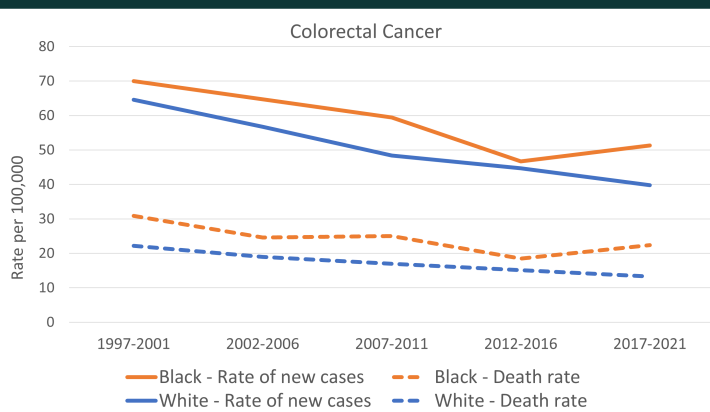
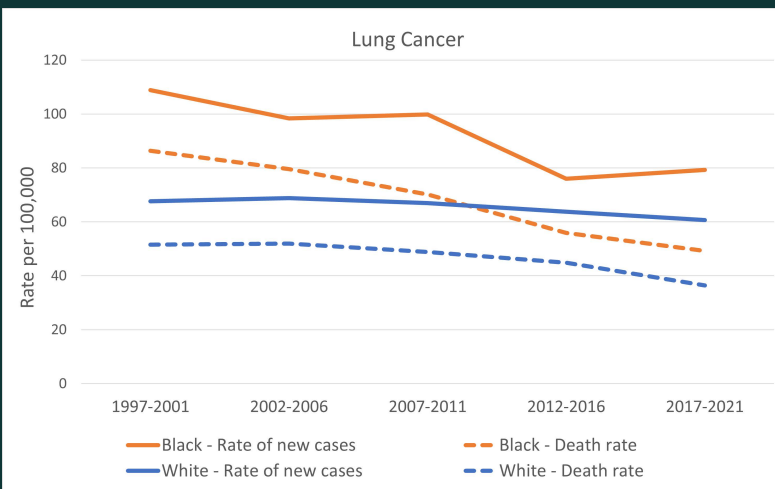


LUNG CANCER

Lung cancer is the leading cause of cancer deaths among Iowans.

The rate of new lung cancer cases has declined among Iowa's Black population, but is still higher compared to the White population.

The rate of lung cancer deaths among Iowa's Black population has **decreased by 43%** from 1997-2001 (86.4 per 100,000) to 2017-2021 (49.2 per 100,000).



COLORECTAL CANCER

Colorectal cancer is the 4th most common cancer in Iowa. Reasons for increasing new cases in young and middle-aged adults are unknown.

The rates of new colorectal cancer cases and cancer deaths have been increasing among Iowa's Black population over the last decade.



References

1. State Cancer Profiles. statecancerprofiles.cancer.gov
2. Surveillance, Epidemiology, and End Results (SEER) Data, November 2022 Submission, SEER 12 Registries
3. Cancer Facts & Figures for African American/Black People 2022-2024. American Cancer Society.

Additional Resources

- [Iowa Cancer Plan](#)
- [CDC: Health Equity in Cancer](#)